



All Aviators under One Sky!®

Pilot Guide 2025

(For pilots flying to AusFly at Wentworth)

Flying Display

- Display Operations
 - 14:00 – 17:00 Friday 14 March 2025 Practice
 - 11:00 – 12:00 Saturday 15 March 2025 Display
 - 14:00 – 15:00 Saturday 15 March 2025 Display

- All Display Pilots must check local NOTAMS and additionally NOTAMS for Area 22 on the day and prior to conducting any display operations.

WARNING - ALL PILOTS

During the Display Times, pilots should remain clear of the Wentworth CTAF. That is, remain greater than 5nm from Wentworth Aerodrome and not below 3,000ft agl. Refer to YWTO NOTAMS for further details.

Pilots arriving/departing Wentworth should not plan to arrive or depart Wentworth

during the display operation times and within 15 minutes either side of those times.

Arrivals

- When flight planning, pilots are reminded to check NOTAMS for YWTO and Area 22
- Wentworth Aerodrome is a CTAF and normal CTAF radio and operating procedures must be **followed at all times** including when the Unicom service is operating. The UNICOM Service will be operating during busy periods on Wentworth CTAF **(118.8)** to provide runway in use, wind conditions, traffic information, and possibly suggested joining instructions.
- The Unicom is an information service only and not a control service. Pilots may use the information provided to enhance their situational awareness and arrival and departure planning, however pilots are solely responsible for the operation of their aircraft at all times.
- Arriving aircraft must call no later than 10nm or 5 minutes from YWTO on the CTAF and announce their CALLSIGN, TYPE, INBOUND TRACK/POSITION and ESTIMATED TIME OF ARRIVAL. If the Unicom service is operating at the time, the Unicom operator will acknowledge your inbound call and advise RWY in use, known traffic and may offer suggested joining instructions to facilitate safe and smooth traffic flow.
 - EG, “Wentworth Traffic, Zulu Echo India, Zenith CH750 STOL, 10 miles South, passing 4 thousand feet on descent, estimating Wentworth at 55, Wentworth Traffic.”
 - “Zulu Echo India, AUSFLY UNICOM, wind is a moderate Southerly. SUGGEST join right downwind RWY 17. TRAFFIC AHEAD is a CT4 on straight-in approach RWY 17. Report mid-downwind for an update on that aircraft’s position.”
- Pilots must watch for other traffic and ensure separation. Expedite Roll through to the ground marshaller and vacate without delay.
- There is no preferred RWY for Wentworth, but please note that RIGHT CIRCUITS are required on RWY 17 and RWY 26. Pilots are also requested not to overfly the township. After landing, and when clear of the runway, switch to Wentworth

Ground (120.85) and advise intentions, whether:

- Day visitor;
 - Overnight stay and camping underwing; or
 - Overnight but not camping; or
 - Static Display aircraft
 - Flying Display aircraft
- Ground marshals will provide advice and, where possible, a “follow me” service.
 - The landing fees have been waived for visiting pilots that attend the event. Thank you to Wentworth Shire Council.

Taxi and Parking

Pilots requiring fuel on arrival should notify the Ground Marshal of that requirement. The Ground Marshal will facilitate fuel requests; however, they may ask that the pilot delays refueling until prior to departure to avoid congestion on the apron. *[Note: a mobile fuel tanker will not be operating at AusFly]*

- Where you are receiving a “Follow me” service, ensure that eye contact is made with the marshal prior to movement and that you follow at a safe distance. Be alert for pedestrians and ready to always stop quickly.
- The “**Parking Marshall**” will direct you to your designated parking area.
- Keep watch for other aircraft & pedestrians.

Departures

- Departing aircraft shall advise intentions prior to commencing to taxi on the Ground frequency (120.85).
- Ground marshals will monitor that frequency and provide information if they believe a conflict may exist. If no response is received from a Ground Marshal and there is no sign of Ground Marshals, return to the CTAF frequency (118.8) and make taxi calls on that frequency as per normal CTAF operations.
- Pilots are responsible for keeping a lookout for other aircraft and must also be aware of the likelihood of pedestrians in aircraft parking areas.
- At the holding point and before entering a runway, pilots are to stop and call on the CTAF frequency (118.8) to determine what traffic is operating in the CTAF as well as making a visual check for circuit traffic and other aircraft on the runway.
- Pilots should only enter a runway when satisfied that no conflict or potential conflict exists. CTAF radio procedures apply.
- The UNICOM Service will be operating during busy periods to aid departing pilots.
- Frequencies are:
 - Wentworth CTAF 118.8
 - Wentworth Ground 120.85
- If you require fuel prior to departure, contact “Ground” prior to taxiing to the fuel bowser.

Note!

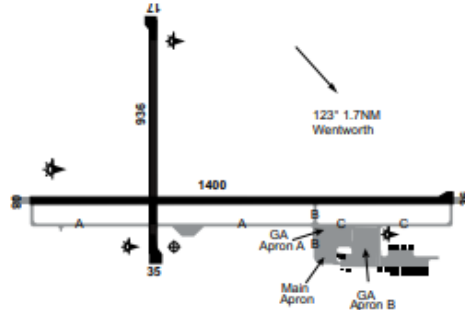
- You may experience a higher volume of circuit traffic than you are used to. If you get stuck or disoriented, then please ask for assistance from the UNICOM. That's what he's there for 😊.
- **Listen** to the radio, **Lookout** and maintain **Situational Awareness**
- There will likely be frequent local flights operating at YWTO including glider ops throughout the event.
- YMIA (Mildura) is a busy airport located 13NM South East of Wentworth. YMIA services short-haul RPT flights and hosts visiting training and gliding operations.

WENTWORTH

ELEV 120

AVFAX CODE 3075

NSW
 340516S 1415331E UTC +10 YWTO
 VAR 9 DEG E CERT
 AD OPR Shire of Wentworth, PO Box 81, Wentworth, NSW, 2648. PH 03 5027 5027. ARO 0429
 952 796 (H24). Fax 03 5027 5000. Website: www.wentworth.nsw.gov.au.



REMARKS

AD charges apply. Access AVBL in accordance with Wentworth Shire Council AD conditions of access and use. Refer to website.

HANDLING SERVICES AND FACILITIES

AVGAS and JET A1 AVBL H24 self-serve. Fuel supplied by IOR Aviation, PH 1300 457 467. Payment via IOR Aviation tag for account holders or via the Fuelcharge APP.

PASSENGER FACILITIES

WC.

APRONS AND TAXIWAYS

1. Main APN: asphalt; flexible pavement; ultra low strength; PCN 10.
2. GA APN A: bitumen; flexible pavement; ultra low strength; restricted to 1,500KG MTOW.
3. GA APN B: bitumen; flexible pavement; ultra low strength; PCN 10.

PHYSICAL CHARACTERISTICS

08/26	082	46a	PCN 10 /F /D /800 (116PSI) /T Spray seal	WID 23	RWS 140
17/35	172	31c	PCN 10 /F /D /800 (116PSI) /T Spray seal	WID 18	RWS 80

AERODROME AND APPROACH LIGHTING

RWY 08/26	LIRL	PAL+AA 120.05	SDBY PWR AVBL
RWY 17/35	LIRL	PAL+AA 120.05	SDBY PWR AVBL

RWY 08/26 and 17/25 edge light spacing: 60M.

OTHER LIGHTING

1. SDBY PWR switchover time: 40 SEC.
2. TWY LGT: Blue edge.

ATS AND AERODROME COMMUNICATION FACILITIES

FIA	MELBOURNE CENTRE	122.1 Circuit Area
-----	------------------	--------------------

LOCAL TRAFFIC REGULATIONS

1. All engine run-ups must be carried out on TWY A, bypass pad east of RWY 17/35.
2. RWS not intended for landing or take-off.
3. APN parking Bay 1 for emergency services ACFT only and for itinerant ACFT with AD OPR prior approval.
4. ACFT parking area north of Main APN restricted to ACFT with MTOW 1,500KG.
5. Helicopter access maximum rotor diameter of 11M. Helitaxi via TWY B only.
6. Carriage and use of radio is required by the aerodrome operator.

FLIGHT PROCEDURES

Right hand CCTS RQ when OPR on RWY 17 and RWY 26.

CTAF 118.8

NOISE ABATEMENT PROCEDURES

1. Circuit training is permitted only between the following hours:
 - a. MON-SAT 0700 – 2100 Local
 - b. SUN and PH 0900 – 1700 Local.
2. No more than four aircraft are permitted to conduct circuit training any one time.
3. When conducting circuit training operations, pilots should, where safe and consistent with expected training outcomes, climb at best rate to circuit height.
4. Pilots should avoid overflying Wentworth township.

ADDITIONAL INFORMATION

1. Animal hazard exists. Increased number of kangaroos, birds of prey and pelicans may be present in VCY of AD.
2. Automated External Defibrillator (AED) located in Aero Club Rooms. Door Access Code - 12345.

CHARTS RELATED TO THE AERODROME

WAC 3458.

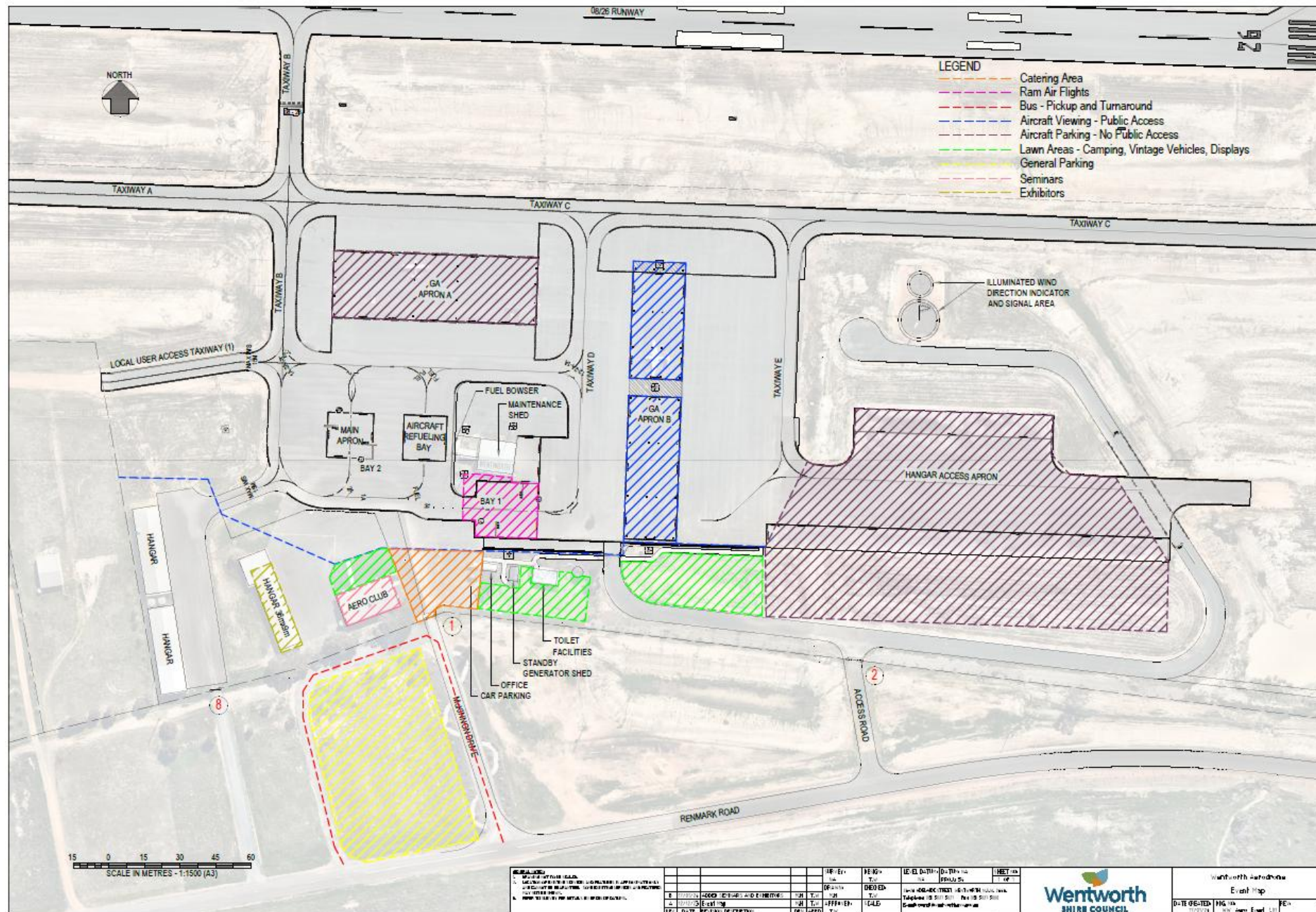
WENTWORTH

RWY	(CN)	TORA	TODA	ASDA	LDA
08	(2)	1400 (4593)	1460 (4790) (3.13%)	1400 (4593)	1400 (4593)
RESA dimensions 120M X 46M commences from RWS end.					
26	(2)	1400 (4593)	1460 (4790) (1.2%)	1400 (4593)	1400 (4593)
RESA dimensions 120M X 46M commences from RWS end.					
Slope Level. RWY WID 23 RWS WID 140 Graded 80					
17	(1)	936 (3071)	996 (3268) (3.38%)	936 (3071)	936 (3071)
35	(1)	936 (3071)	996 (3268) (4.85%)	936 (3071)	936 (3071)
OBST fence 5FT ABV and 32M N of RWS not taken into account in the calculation of TODA, GRAD and STODA.					
Slope Level. RWY WID 18 RWS WID 80					

SUPPLEMENTARY TAKEOFF DISTANCES

RWY08-	903(2963)(1.6)	1135(3724)(1.9)	1278(4193)(2.2)	1349(4426)(2.5)
RWY17-	891(2923)(2.5)	993(3258)(3.3)		
RWY35-	805(2641)(2.5)	925(3035)(3.3)		

It is a pilot's responsibility to check for currency on the day of ops at YWTO



NO.	DESCRIPTION	DATE	BY	APP'D	DATE	BY	APP'D
1	ISSUED FOR PUBLIC CONSULTATION						
2	ISSUED FOR PUBLIC CONSULTATION						
3	ISSUED FOR PUBLIC CONSULTATION						
4	ISSUED FOR PUBLIC CONSULTATION						
5	ISSUED FOR PUBLIC CONSULTATION						
6	ISSUED FOR PUBLIC CONSULTATION						
7	ISSUED FOR PUBLIC CONSULTATION						
8	ISSUED FOR PUBLIC CONSULTATION						
9	ISSUED FOR PUBLIC CONSULTATION						
10	ISSUED FOR PUBLIC CONSULTATION						



Wentworth Aerodrome	Event Map
DATE CREATED: 14/01/2023	DATE REVIEWED: 14/01/2023
PREPARED BY: [Name]	APPROVED BY: [Name]



RUNWAY INFORMATION

08/26 RUNWAY (1400m x 23m WIDE)
 CODE 2D NON-PRECISION INSTRUMENT
 OMGWS 4.5m UP TO 6m
 RUNWAY SURFACE TYPE - SPRAY SEAL

17/35 RUNWAY (936m x 18m WIDE)
 CODE 1B NON-PRECISION NON-INSTRUMENT
 OMGWS 4.5m UP TO 6m
 RUNWAY SURFACE TYPE - SPRAY SEAL

APRON/TAXIWAY INFORMATION

NAME	OMGWS	ARC LETTER	WIDTH(m)	SURFACE TYPE
TAXIWAY A	4.5m UP TO 6m	B	10.5	SPRAY SEAL
TAXIWAY B	4.5m UP TO 6m	B	10.5	SPRAY SEAL
TAXIWAY C	4.5m UP TO 6m	B	10.5	SPRAY SEAL
LOCAL USER ACCESS TAXIWAY (1)	UP TO 4.5m	A	7.5	SPRAY SEAL
LOCAL USER ACCESS TAXIWAY (2)	4.5m UP TO 6m	B	10.5	SPRAY SEAL
MAIN APRON	4.5m UP TO 6m	B	10.5	ASPHALT
GA APRON A	4.5m UP TO 6m	B	10.5	SPRAY SEAL
GA APRON B	4.5m UP TO 6m	B	10.5	SPRAY SEAL
HANGAR ACCESS APRON	4.5m UP TO 6m	B	10.5	ASPHALT

